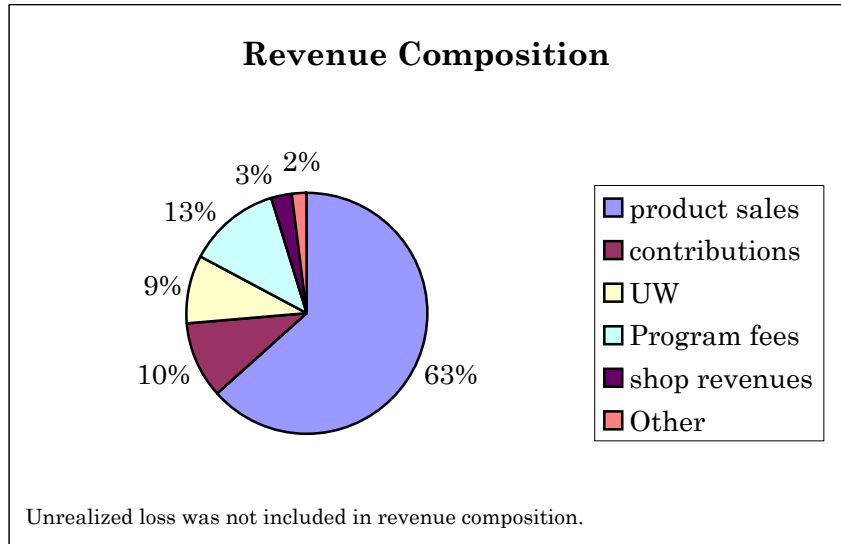


Girl Scouts of NE Kansas & NW Missouri
Statement of Activities: Year Ended September 30, 2008

Revenues, Gains and Supports

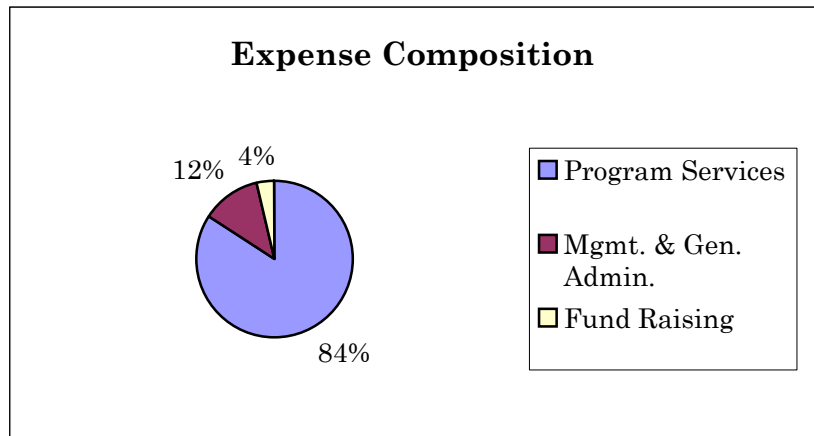
Sales of cookies (net)	\$4,883,704
Sales of Magazines, Nuts & Chocolates (net)	\$263,690
Contributions	\$815,948
United Ways	\$763,569
Program Fees	\$1,011,361
Retail Sales (net)	\$209,422
Investment Returns *	-\$564,347
Other	\$46,940
Total	<u><u>\$7,430,287</u></u>



* Investment Income	\$148,899
Unrealized Loss	<u><u>(\$713,246)</u></u>
	(\$564,347)

Expenses and Losses

Program services	\$7,624,471
Management and general	\$1,099,161
Fundraising	<u>\$335,257</u>
Total	<u><u>\$9,058,889</u></u>
Depreciation	<u>\$420,762</u>
Total	<u><u>\$9,479,651</u></u>



Outdoor Program & Property 2009 Budgets: Direct Revenue and Expense
Fiscal Year Ending September 30, 2009

	Revenue	Expense	Council Subsidy
Resident Camps	\$440,875.00	(\$693,275.00)	(\$252,400.00)
Camp Property		(\$746,245.00)	(\$746,245.00)
Other Council Properties	\$2,675.00	(\$90,877.00)	(\$88,202.00)
Camping & Outdoor Activities	<u>\$110,325.00</u>	<u>(\$370,314.00)</u>	<u>(\$259,989.00)</u>
	<u><u>\$553,875.00</u></u>	<u><u>(\$1,900,711.00)</u></u>	<u><u>(\$1,346,836.00)</u></u>